



DOVRE 2620SC/B

This insert with a flat glass door combines a contemporary design with robust technology, giving your interior both atmosphere and class.

The 2620SC/B is fitted with 2 built-in fully adjustable fans (with a capacity of 90 m³ each) which accelerate the convection air. A speed regulator is supplied.

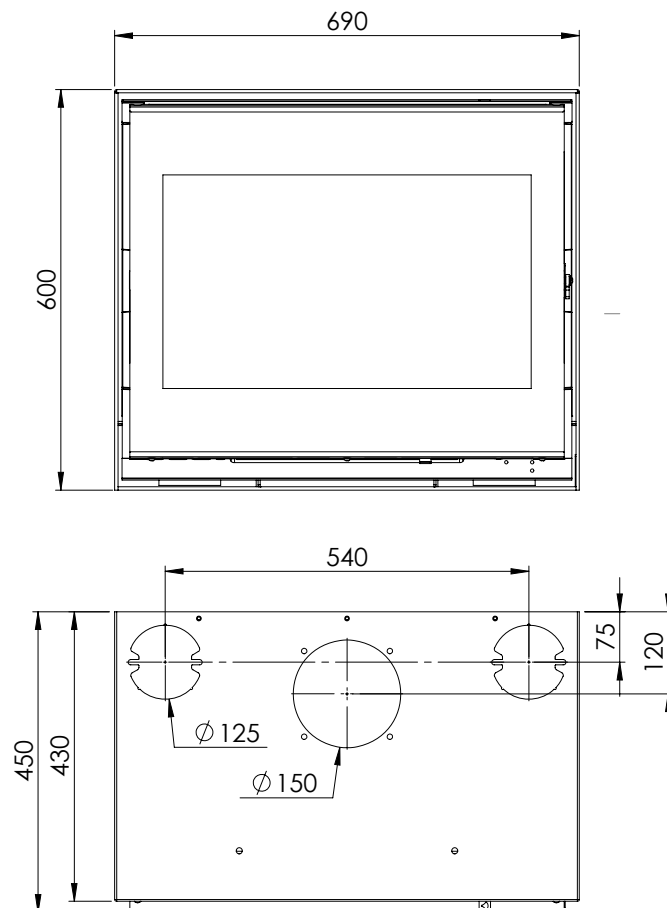
With this series you are able to use different fuels: wood, coal and lignite. These appliances are fitted with both a grate and an ash box. The coal basket is optional, as well as a 3 or 4 sided frame.

The door opens to the right (easily convertible to opening to the left).



TECHNICAL SPECIFICATIONS

- Nominal power: 10 kW
- Maximum power: 12 kW
- Fuel: wood, coal and lignite
- Length of logs: 50 cm
- Connection diameter: 150 mm
- Top connection
- Airwash glass aeration



Options

- Coal basket
- 3 or 4 sided frame



www.dovre.be